

COR-SPTM1

OUTDOOR PAN-TILT-ZOOM w/ THERMAL IMAGING

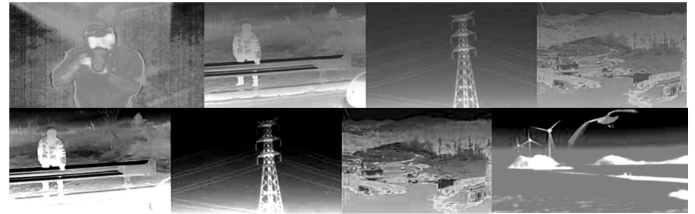
Micro Bolometer Technology with Advanced Zoom



Weatherproof Aluminum Housing with IP68 Rating, good for indoor or outdoor placement.

Camera shown with Optional Bracket

- Zoom In on Security Threats
- 720x480 Color Thermal Images
- IP68 Weatherproof Construction
- Multiple Color Imaging Modes
- 8 Group Tours with up to 60 Preset Steps



THERMAL VIDEO SPECIFICATIONS: MODEL COR-SPTM1

| | |
|---------------------|---|
| THERMAL SENSOR | Uncooled Vox Micro Bolometer |
| WAVELENGTH | 8 to 14 μm |
| PIXEL PITCH | 25 μm |
| RESOLUTION | 720 x 480 pixels |
| LENS | 20mm (Available with 35mm optional lens) |
| THERMAL SENSITIVITY | 40mK / F1.0 (NETD) |
| VIDEO OUTPUT | 1Vp-p, 75 Ohm Imped. (CVBS CCTV composite signal) |
| IMAGING MODES | Color (3 modes) or black/white |

FUNCTIONS

| | |
|-------------------|---|
| CALIBRATION MODES | Auto & Manual |
| DEGREE DETECTION | Min-to-Max Selectable Temperature Range |
| DIGITAL ZOOM | 4x in 15 steps (Optimized Magnification Format) |
| INVERSE MODE | Yes |
| IMAGE FLIP | Yes |
| AGC | Off/On with 5 Levels |
| PRESETS | 165 Positions w/ Selectable Speed & Freeze Options |
| GROUP TOUR | Up to 8, with up to 60 preset steps |
| AUTO SCAN | Yes, programmable format |
| PATTERN MEMORY | Up to 8 saved patterns (duration of 480 seconds max.) |
| OSD MENU | Yes |

ELECTRICAL & MECHANICAL

| | |
|----------------|---|
| PAN | 0°-360° Continual |
| TILT | 0°-360° Continual |
| PAN SPEED | 0.5° - 200°/s. (manual), 200°/s. Max (preset) |
| TILT SPEED | 0.5° - 200°/s. (manual), 200°/s. Max (preset) |
| ACCURACY | >0.023° |
| COMMUNICATION | RS485 |
| ALARM | Four states and two auxiliary outputs |
| MATERIAL | Die-Cast Aluminum |
| TEMPERATURE | -40°-60°C (Storage), -30° -55° (Operational) |
| CERTIFICATIONS | CE, FCC, IP68 |
| POWER | 24VAC |



Camera shown without Optional Bracket

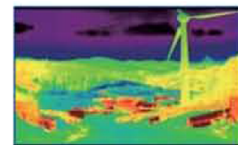
This thermal imaging camera (sometimes called a TIC) produces images in the complete absence of visible light, by using the infrared light that is generated on the atomic level by all objects. A TIC does not require an external source of infrared light, works in total darkness, and can "see" through smoke, fog and rain. The warmer an object is, the more thermal energy it radiates as infrared light. This camera offers two ways to view the thermal camera video.



THERMAL IMAGING MODES



BLACK & WHITE



RAINBOW



IRON



GLOWBOW

COR-SPTM1

