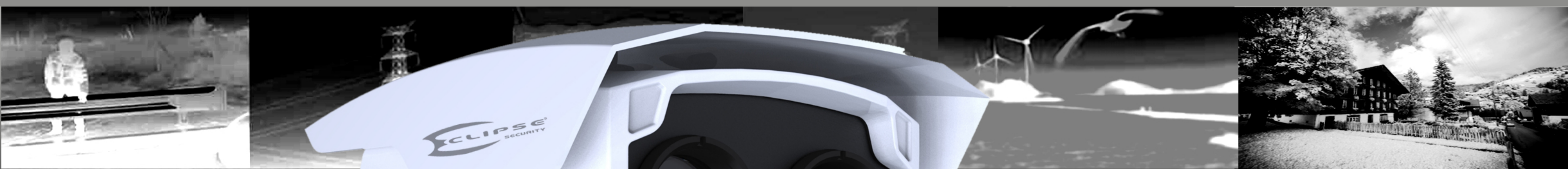




# Outdoor Bullet with THERMAL IMAGING



Stable Static  
Micro Bolometer  
Technology

6-50mm Manual Varifocal Lens  
Thermal Imaging Video Output  
Sony™ Super HAD CCD II Sensor  
>700 TV-Line CCTV Resolution  
960H Generation Image Capture



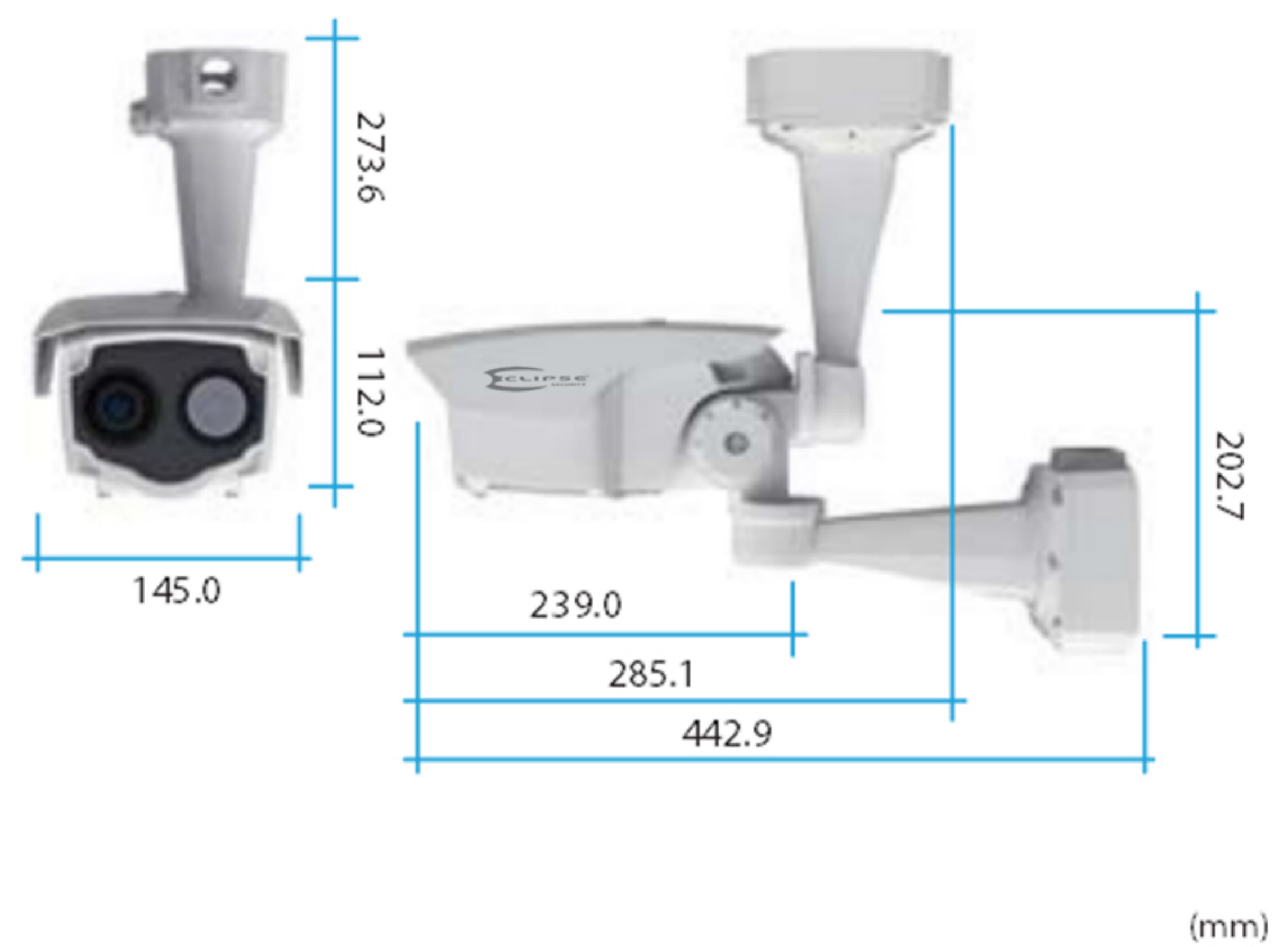
Dual Video Image Pickup

3-Axis Bracket with Wall Mount  
Junction Box

Installer's Hatch with OSD and Thermal  
Imaging Controls

The ECL-TM3 is a stable static night vision camera equipped with a micro bolometer thermal imaging camera along with super high resolution color camera. It is ideal for short and medium-range perimeter surveillance purposes and provides remarkable sharp and detailed images under the harshest weather conditions.

## DIMENSIONS



## ECL-TM3 THERMAL VIDEO SYSTEM SPECIFICATIONS

THERMAL SENSOR	Uncooled Vox Micro Bolometer	WAVELENGTH	8 to 14 $\mu\text{m}$
THERMAL RESOLUTION	320 x 240 pixels	PIXEL PITCH	17 $\mu\text{m}$
THERMAL LENS	7.5mm (Available with 19mm or 35mm optional lens)		
THERMAL SENSITIVITY	50mK / F1.0 (NETD)		

## ECL-TM3 CCTV VIDEO SYSTEM SPECIFICATIONS

VIDEO SENSOR	1/3" 960H Sony™ Super HAD CCD II		
TOTAL PIXELS	1020(H) x 494(V) , or 480k		
LENS	6-50mm, manual varifocal (F 1.4 )		
SCANNING SYSTEM	2:1 Interlace		
RESOLUTION	700 TV-Lines or greater		
S/N RATIO	52dB (AFC off)		
MIN. ILLUMINATION	0.005 LUX		

## ECL-TM3 OVERALL SYSTEM SPECIFICATIONS

OSD	OSD Control Board with: Vertical & Horizontal Image flip, Auto Calibration, White Hot, Black Hot, AGC, Freeze AGC, Digital Zoom		
WEIGHT	4.6lbs (2.1kg)		
DIMENSIONS	9.4"(W) x 4.4"(H) x 5.7"(D) (239mm x 112mm x 145mm)		
CERTIFICATIONS	CE, FCC, IP66		
WEATHERPROOF	Outdoor rated IP66		
POWER	24VAC		
OPERATING TEMP.	-31° F to 149° F ( -35° C to 65° C )		



## THERMAL IMAGING MODES



BLACK HOT



WHITE HOT

This thermal imaging camera (sometimes called a TIC) produces images in the complete absence of visible light, by using the infrared light that is generated on the atomic level by all objects. A TIC does not require an external source of infrared light, works in total darkness, and can "see" through smoke, fog and rain. The warmer an object is, the more thermal energy it radiates as infrared light. This camera offers two ways to view the thermal camera video. Users can select emphasis on warm objects using either black, or white (see above).

## DUAL VIDEO OUTPUT

Thermal Camera Video



High Res. CCTV Color Video

